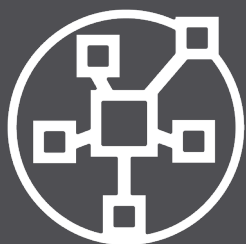


The all-round carefree package for printer admins and users.



Centralized
Management



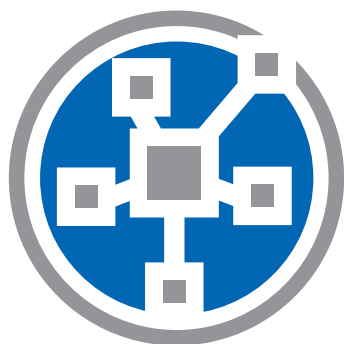
Driverless
Printing



Monitoring
& Reporting

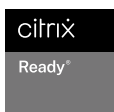


Reliability &
Migration



steady**PRINT**[®]

So much more than printer management.

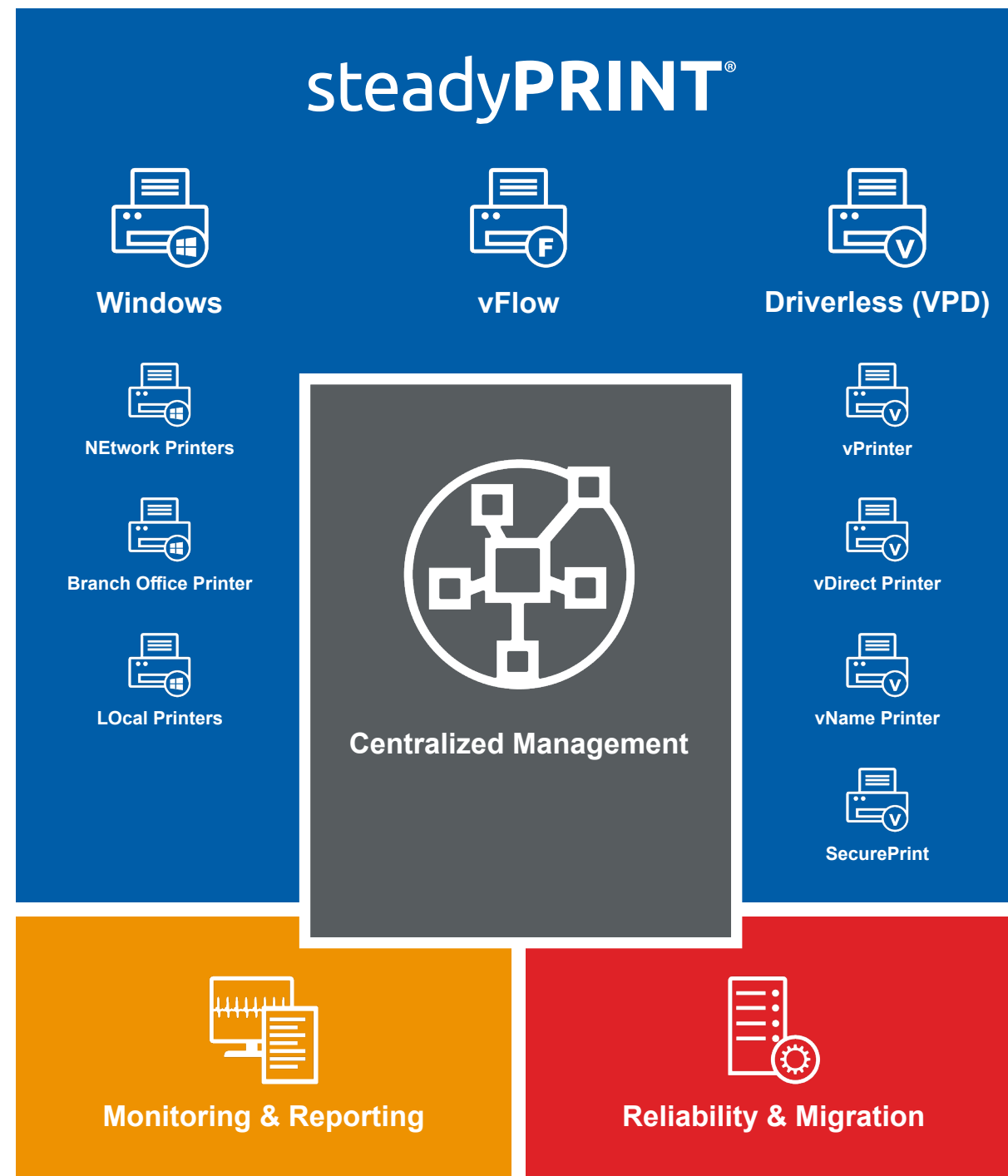


SAP[®] Certified
Integration with SAP S/4HANA[®]

All In One Tool.

Organize all tasks of your printer management centrally – intuitively and clearly structured: Management of the printer connections, driverless printing, monitoring & reporting of the complete print environment, print server reliability and migration and many more.

Offer your users different options to print documents in each situation easily and flexibly. The all-round carefree package provides a solution for any of your requirements.



All worlds of printing combined in a single software.

Just print – when, where and how you want.

With steadyPRINT, you can create and manage different types of printer assignments. Each assignment type offers advantages for various applications. Mixed operations are of course possible.



Windows Network Printer: The classic

Classic use of your Windows network printer with native printer drivers.



Local Printers: Local - but central

Locally connected printers (e.g. via USB) can be inventoried and centrally maintained via the steadyPRINT Center.



Branch Office Printer: Alternative for small branch offices

Local IP printers with native Windows printer drivers for small branch offices with only a few workplaces and without print server. Central configuration, but without load on WAN connections during the printing process.



VPD vDirect Printer: Quite normal – only better

Use the steadyPRINT Virtual Printer Driver instead of the native printer driver to provide your network printers. The entire driver maintenance at the client will thus no longer be necessary. For the user, nothing will change.



VPD vPrinter: Driverless universal printer

Provide the user with only one printer that offers different possibilities (e.g. printing with a physical printer, batch print, PDF print, e-mail delivery etc.).



VPD vName Printer: The solution for special systems

For all special systems (e.g. DATEV, ERP-, KIS-systems etc.). Shift of the printer management from the special application to the clearly structured steadyPRINT management console.



VPD SecurePrint: Secure and flexible printing

Select the printer of your choice and use the app on your smartphone to start your print jobs. Stay flexible and avoid confidential documents being read at the printer.



VPD vFlow: More than printing!

Define individual workflows for your documents. For example PDF creation, storage, mail delivery and printouts with certain settings and many more – just with one click.



Centralized Management



All in one – central and clearly structured

Organize all tasks of your printer management centrally – intuitively and clearly structured. Map your company units by using a recursive folder structure. The steadyPRINT Center can be installed on different computers or servers as often as required. Thanks to the **Multi Admin Management**, several administrators can use the steadyPRINT Center at the same time and are notified of any modifications via the Journaling tool. Use the role-based authorization system to manage the administrators' authorizations. The most important functions are available to the administrators in the new sP Control App.



Printer assignments

With steadyPRINT, you can create and manage **Windows network printers**, **local printers** as well as different **driverless network printer assignments (via steadyPRINT VPD)**. Printer assignments can be created on the basis of users, groups, folders, organizational units, MAC addresses and computers (even Thin Clients). steadyPRINT enables separate printer assignments for terminal servers and workstations. Newly connected printers are immediately available to the user without any re-login.



Location-based assignment

Define **IP ranges** for different departments or locations. An IP filter can be created on print server, folder or printer level. During a change of location, all printer connections and default printers are automatically and immediately adapted to the respective IP range.



Default printers

Define default printers for users, computers or groups and take advantage of the various possibilities the **default printer management** offers (e.g. by priority list, location, session period etc.).



Maintenance mode

In order to avoid any bottlenecks due to maintenance work, simply set your printers or print servers into the **maintenance mode**.



Printer driver management

Simply and centrally maintain all **printer drivers** in your environment via the steadyPRINT Center.



Local printers

Manage even **local printers** in a central way. You can install, uninstall or change local printers on workstations. For this, the computer does not even have to be switched on. steadyPRINT enables users and administrators to set **local default printers** not only on user but also on computer level. You can also import a workstation as a **local print server** and share the connected printers with other users.

One Tool for the Complete Management of your Print Environment.

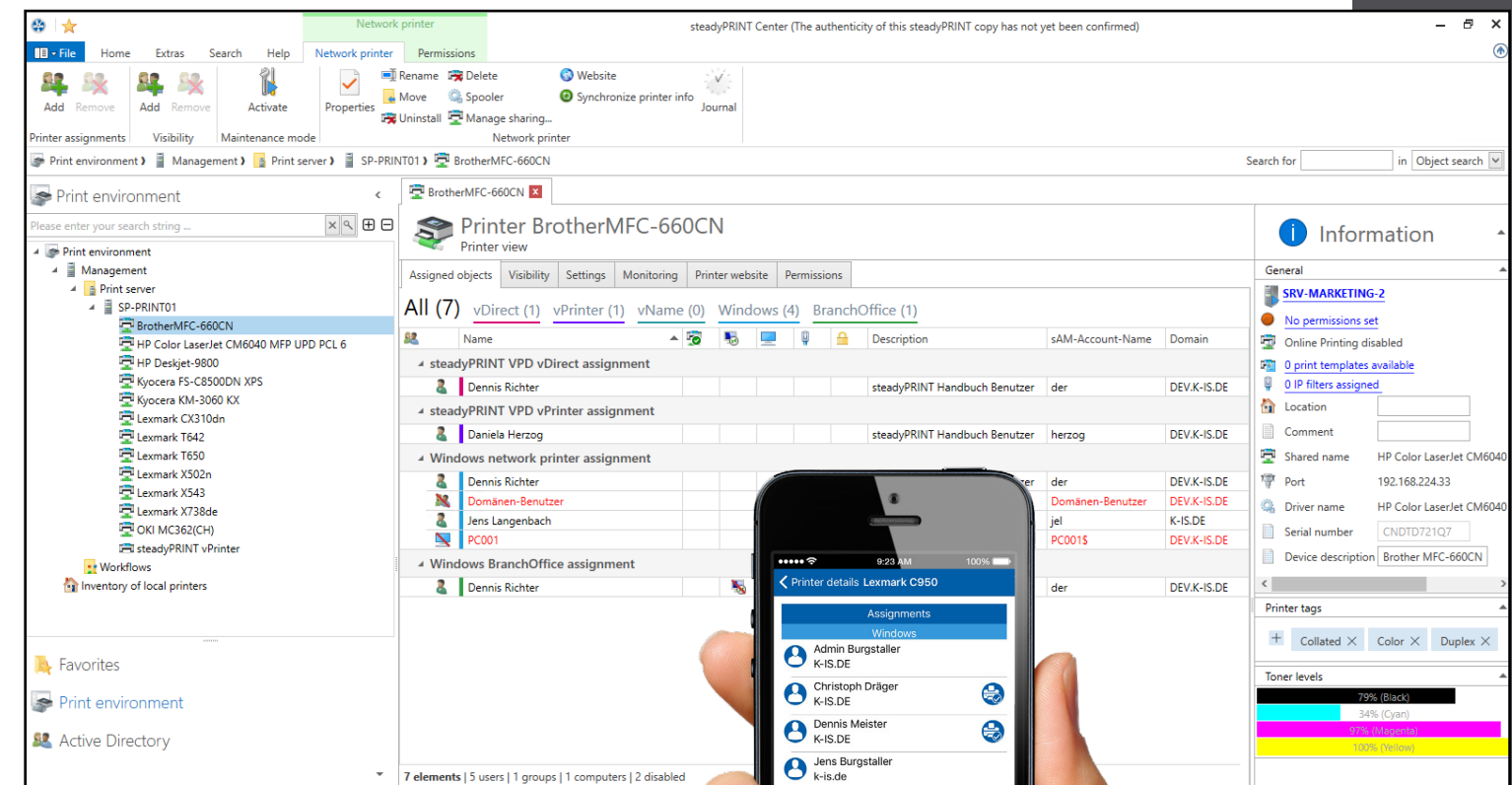


User Self Service

The steadyPRINT Agent offers its users an overview of all printer connections. Thanks to the intuitive operation, printer connections can be added or removed and default printers can be set even without any knowledge of Windows. If IP areas are defined, the users are only shown printers of the IP range in which they are located.

steadyPRINT determines printer functions so that users are able to search for specific printers offering the required function (e.g. duplex print). In addition, individual „printer tags“ can be assigned for an extended search (e.g. label printer“).

The creation of Agent profiles allows the definition of user-, group- and computer-dependent settings for the display and the functions of the steadyPRINT Agent. In addition, printers can be configured as „visible“ or „hidden“ for specific users or groups.



The steadyPRINT Center



VPD



Driverless Printing

steadyPRINT VPD (Virtual Printer Driver)

steadyPRINT VPD is a **virtual printer driver** allowing printers in a company to be assigned to the client in a „driverless“ way. steadyPRINT VPD offers **a range of possible applications**. From the provision of your network printers without tedious driver maintenance and the creation of specific printer assignments for special systems up to secure FollowMe Printing with the steadyPRINT App.

The creation of **Print Templates** allows the specification of certain printer settings which can then be selected by the user with one click.

VPD vDirect: Quite normal – only better

Provide your network printers as vDirect Printers with the steadyPRINT Virtual Printer Driver. The **entire driver maintenance** at the client will thus no longer be necessary.

VPD vPrinter: Driverless universal printer

Driverless printing for everyday use with different options for the user: **printing with a physical printer, batch print, PDF print, e-mail delivery** etc.

With the steadyPRINT vPrinter being a **default printer**, you will never have to think about which default printer you are going to use for which application. You decide on a case-by-case basis what you actually do with the printout.

VPD vName: The solution for special systems incl. reliability

Assignment type for **special applications (e.g. KIS, DATEV oder ERP systems)** which is used to outsource the printer management from the special application. The administrator stores a printer that can have any name in special systems. In the background, however, steadyPRINT is used to assign different physical printers to this printer type for groups or users. A **print server failure** can easily be intercepted even with running applications, as the printer name remains the same.

VPD vFlow: Rule-based printing, reliable printers and individual workflows

Reduce the printing costs in companies by using the **rule-based printing** tool. Have for example e-mails only printed black and white or documents with more than 50 page in duplex mode.

Printer reliability: Redirect print jobs if the desired printer is not available and notify the user via a message box. Or redirect the print job to a SecurePrint batch so that the user has to register at a printer of his choice to start the printout.

Define individual **Workflows** for your documents. For example PDF creation, storage, mail delivery and printout with certain settings and many more - all with just one click.

Possible actions: PDF processing, page area, watermark/background image, if ... then ... else ..., message box, printing, e-mail delivery, SecurePrint batch storage, default batch storage, cloud storage

The virtual printer driver steadyPRINT VPD.

VPD SecurePrint: Secure and flexible printing

Select the printer of your choice and use the **app** on your smartphone (iOS or Android) to start your print jobs. Stay flexible and avoid **confidential documents** being read at the printer.

Online Printing: Guest printing / BYOD

Give visitors the convenience of printing any document in your company. As soon as a visitor has logged into your company network with any end device, he/she can upload the desired documents via a **website** in the browser, select a printer and print. After printing, the data will automatically be deleted from the server.

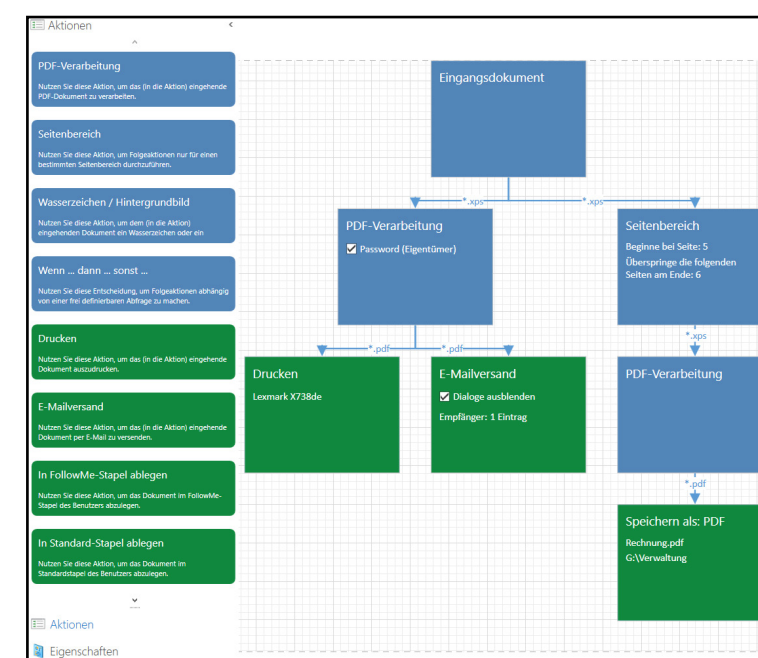
Integrated PDF printer

With the PDF printer integrated in the **steadyPRINT vPrinter**, you can create a **PDF document** from your printout, which can then be saved or directly sent via e-mail. If required, you can store stationery. In addition, several PDF documents can be merged (**PDF merge**).

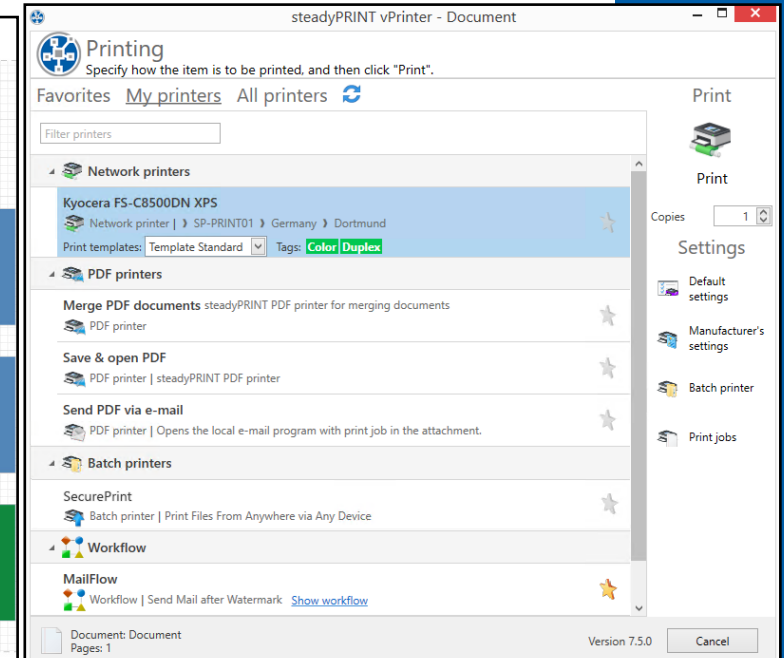
Batch print

Each user can individually use **one or several batches**. Create, for example, a batch for invoices or first collect all documents, that are used for a project or an appointment in a batch.

Store your printouts in a batch if you are **on the move** and have no physical printer within your reach. As soon as you get back to the office, you will be reminded of open print jobs, which can then be printed.



Example workflow



steadyPRINT vPrinter





Monitoring & Reporting

Always up to date.



Everything at a glance

On the one hand, steadyPRINT provides you with all **default information** of a printer, on the other hand, however, you can access **manufacturer-specific data**, e.g. toner or paper status, fixing stations, printed color or black-and-white pages, copies, maintenance or leasing data and many more. This data is clearly displayed in the dashboard.

Automatic notification

Define **thresholds for warnings and errors**. This way, you can for example have automated e-mails being sent to your purchase department at a certain toner level, inform the controlling department as soon as a specified number of printed pages is reached or notify your technical support of an error.

Cost centers

With steadyPRINT VPD it is possible to calculate printing costs on the basis of page prices (mono and color) stored for a cost center. For this purpose, the administrator creates cost centers via the steadyPRINT Center and stores the respective users. During the printing process, the number of pages is booked to the corresponding cost center. Finally, a report provides a cost overview for the respective cost center and enables an export of the information.

Reports

Create **reports** that give you a simple overview of your environment. Have for example the average printing costs or devices with frequent error messages displayed. Reports can automatically be created and exported into different formats and sent by e-mail at set times. steadyPRINT offers a series of possible reports from the **different categories**.

Report designer

The **report designer** enables you to generate individual reports. Have all important data be displayed in the way you need it.



Components



Inventory



Costs



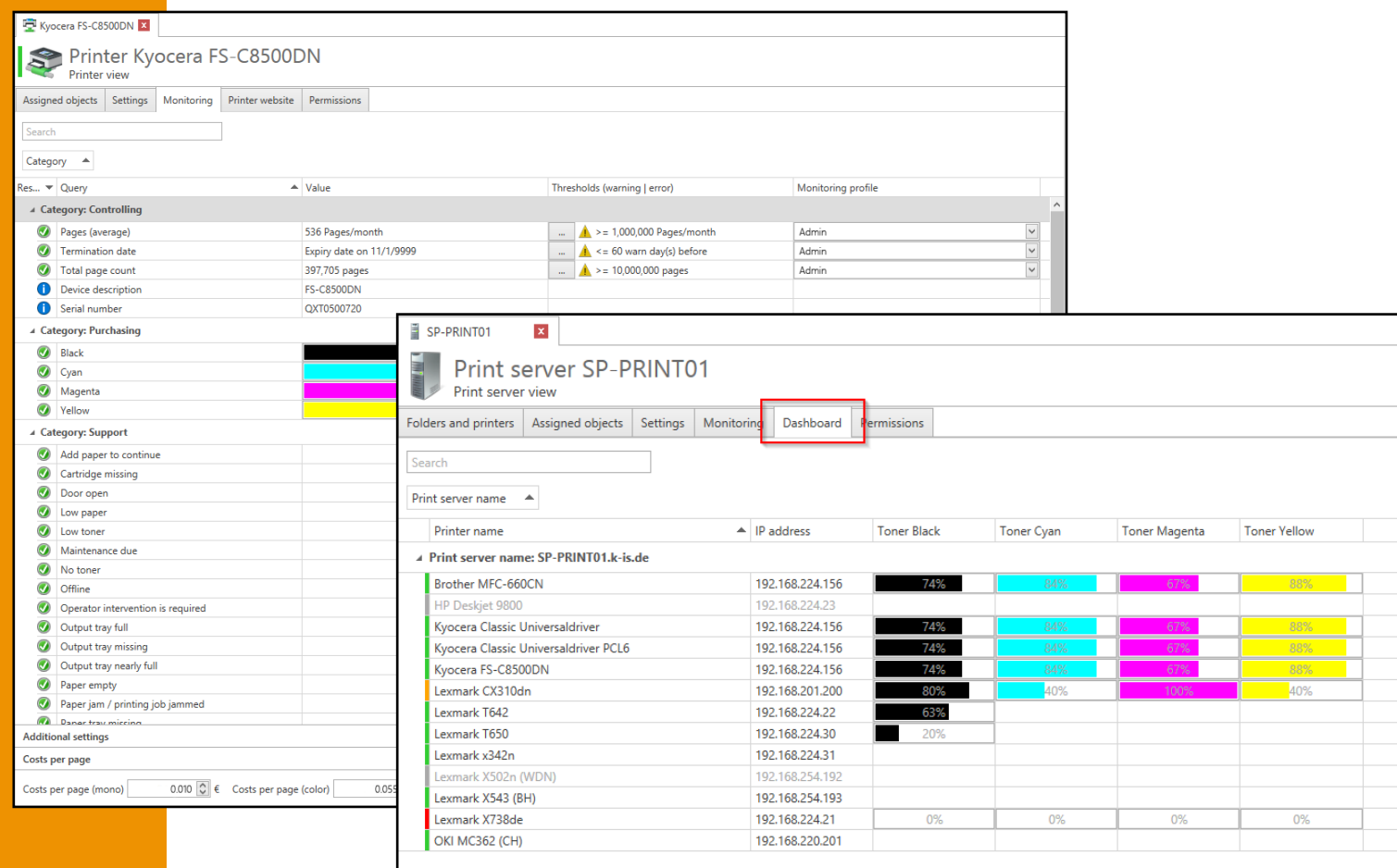
Maintenance



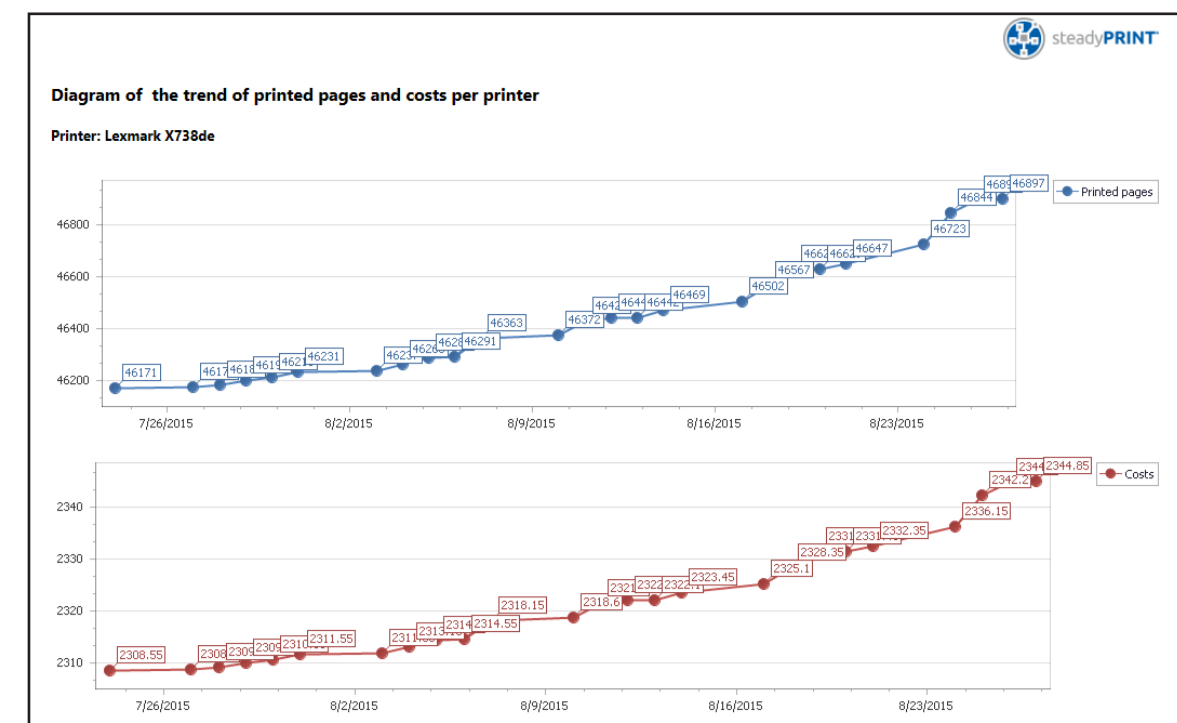
Assignments



Others



Printer view & steadyPRINT Dashboard



Example report



Print Server Management



What happens in case of a failure?

In case of a failure, steadyPRINT immediately and completely switches all printer connections from the master print server to the assigned **backup print server** without any delay. This way, all users are able to continue printing without any problem and to work effectively and efficiently.



Running scripts in case of a failure

In case of a print server failure, steadyPRINT is also able to run a **script** automatically so that even applications, that are not based on Windows printer standards are supported.



Reliability for special systems

Thanks to the virtual printer driver steadyPRINT VPD, you can benefit from the print server reliability **even with special systems** (e.g. KIS systems such as ORBIS or ERP systems). Only when a printing process is started, steadyPRINT checks whether the master- or backup print server is active and creates the respective connection. This way, a print server failure can easily be intercepted **even with running applications** as the printer name remains the same.



Maintenance mode for print servers

Use the **maintenance mode** to make changes at the print server without interrupting the users' workflow.



Automatic notification

Generate automatic **e-mail notifications** for all responsible persons being informed immediately in case of a print server failure.



Printer reliability

If a document is printed via the vFlow printer and sent to a printer that is not available or offline, it is automatically sent to the **backup printer** as defined in the workflow. The user is notified of the transfer via a pop-up window. Alternatively, the printout is stored in the SecurePrint batch so that the user can individually choose to which printer the document is to be sent.

Reliability & Migration of your Print Servers.

Print server migration

steadyPRINT makes the print server migration easier than ever – even with different operating systems. All Windows server **operating systems** as of Windows server 2003 are supported, whether 32 or 64 bit.

Printer migration

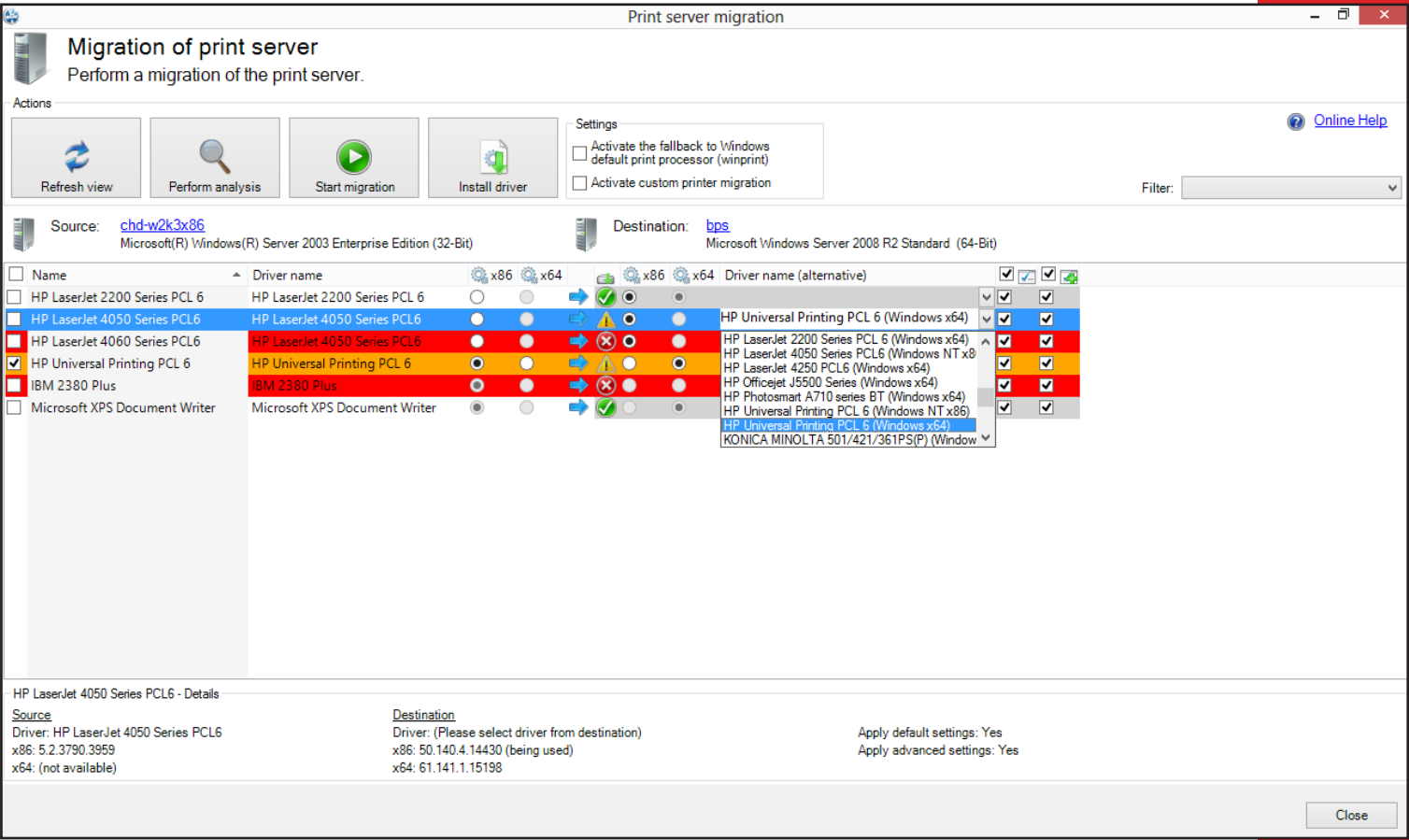
steadyPRINT creates the **printers on the new server** (incl. name, driver, port, sharing and settings), takes over the users and transfers the printer sharings.

User migration

The **user migration** enables all printer connections of the users to be deleted from the old print server and switched to the new print server.

Driver migration

If **driver conflicts** occur during the migration from a 32 bit system to a 64 bit system, steadyPRINT provides a range of alternative drivers on the target system. This range can be adopted automatically for all relevant cases.



Print server migration



login up to 30% faster

batch printer

Branch Office Printer

minimization of downtimes

workflow printer

integration of several AD trees in the Center

dashboard

manufacturer-specific SNMP queries

KIS systems

minimum support effort

migration of local printers to print server

printing without printer

print server migration

monitoring

performance profiles

local printers

compression

report designer

driver management

PDF merge

security

FollowMe / pull printing

folder structure

print server reliability

protection of sensitive documents

assignment of AD objects to locally shared printers

alert

VMware View Client name

SecurePrint app

admin app

inventory

centralized updates

Citrix UPD

test runs

ERP systems

offline default printer

thin clients

guest printing

location-based assignment

automatic running of scripts

user self service

maintenance mode for printer & server

export of computer information incl. local printers

default printer management

DATEV

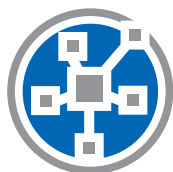
cost control

print history

Agent overview with remote management

monitoring profiles

changing workplaces



steady**PRINT**®

Prices on request. Further information on our homepage: www.steadyprint.com



www.steadyprint.com



SAP® Certified
Integration with SAP S/4HANA®

steadyPRINT | K-iS Systemhaus Group



www.steadyprint.com



sales@steadyprint.com



D-Siegen:	+49 271 31370-45
D-Simmern:	+49 6761 9321-45
D-Freiburg:	+49 7681 47409-80
D-Berlin:	+49 30 20005970-0
D-Kassel:	+49 5677 228999-0
CH-Basel:	+41 55 53610-26
AT-Salzburg:	+43 662 202299-3

steadyPRINT is a registered trademark of the K-iS Systemhaus group. No liability for incorrect or incomplete information.
All information without guarantee. Subject to modifications. As of June 2023.