

HowTo - steadyPRINT - Software distribution by steadyPRINT using Active Directory (AD) - English

Requirements and Preparations

Requirements

The following hardware requirements must be met by the systems (clients) in order to distribute software in the network with steadyPRINT in version 7.0.0 or above:

- .NET Framework version 4.6.1 must be installed as a minimum,
- Client operation system: Windows 7 must be installed as minimum,
- Terminal server operation system: Windows Server 2008 R2 must be installed as minimum.

Preparation

Create a share such as \\SERVER_NAME\Software Installation\steadyPRINT 6.0.0 in your network and make it available for all clients. You should also add the "Authenticated Users" account to the share with read access.

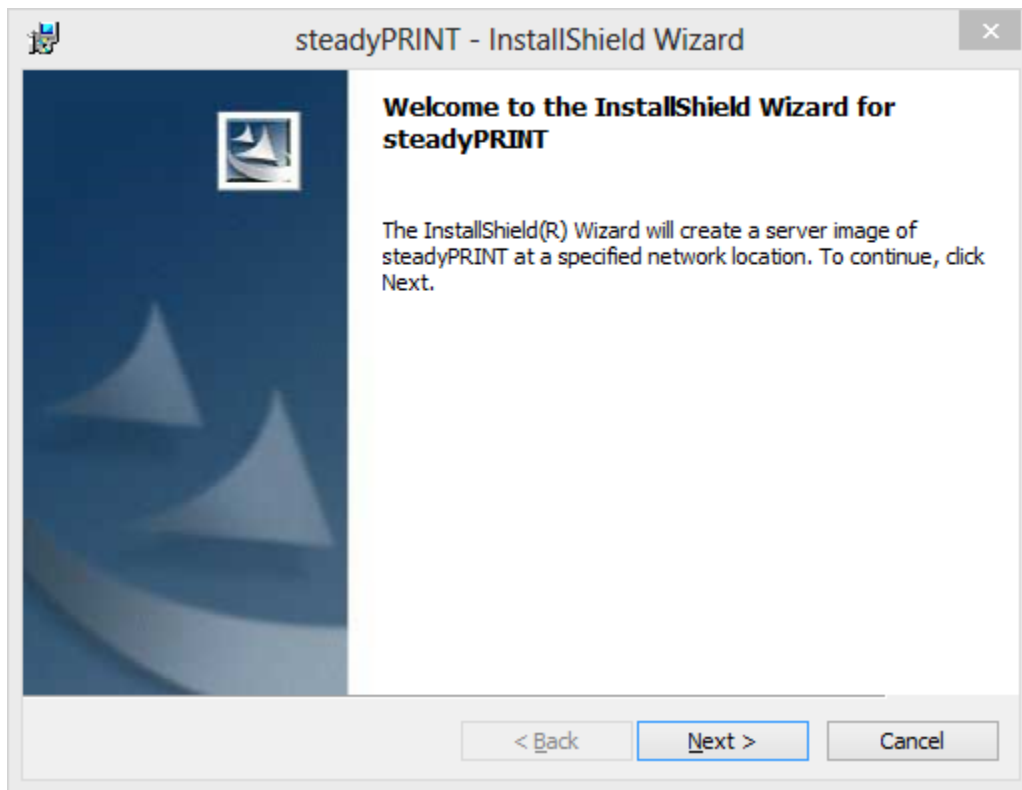
Creating an administrative MSI package for software distribution in the network

1. Log on to your workstation as administrator.
2. Change to your command line interface and go to the location where your unzipped MSI installation package has been saved (see screenshot - sequence 1).

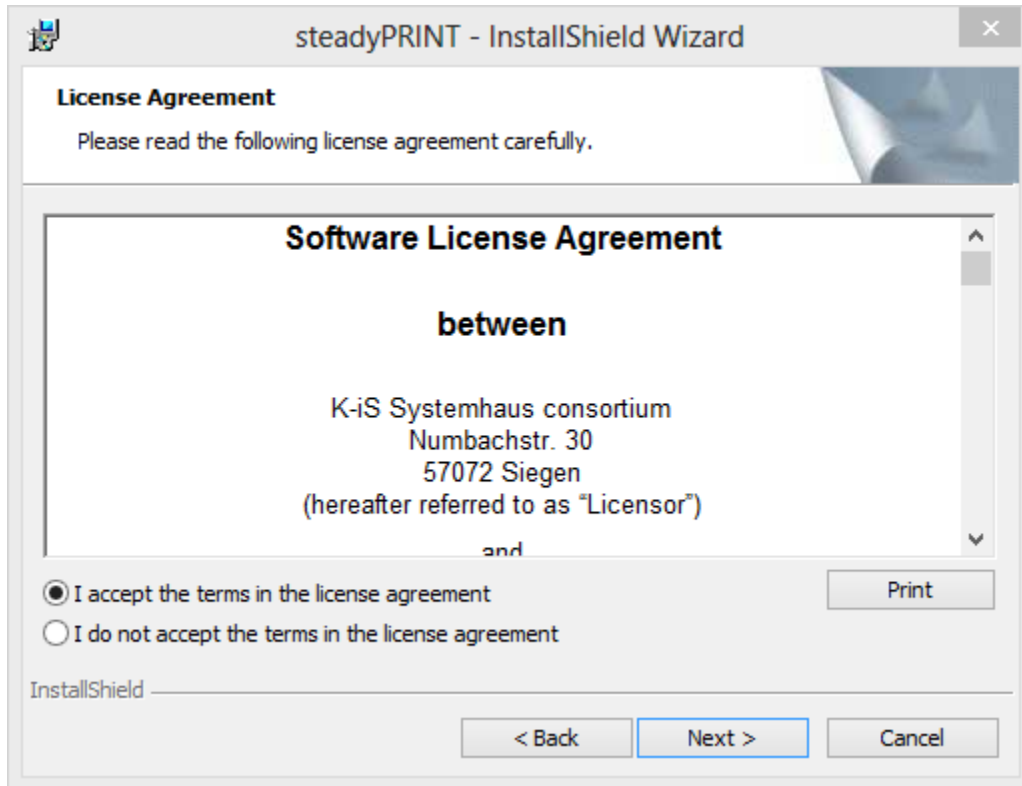


```
C:\>msiexec /a steadyPRINT.msi
```

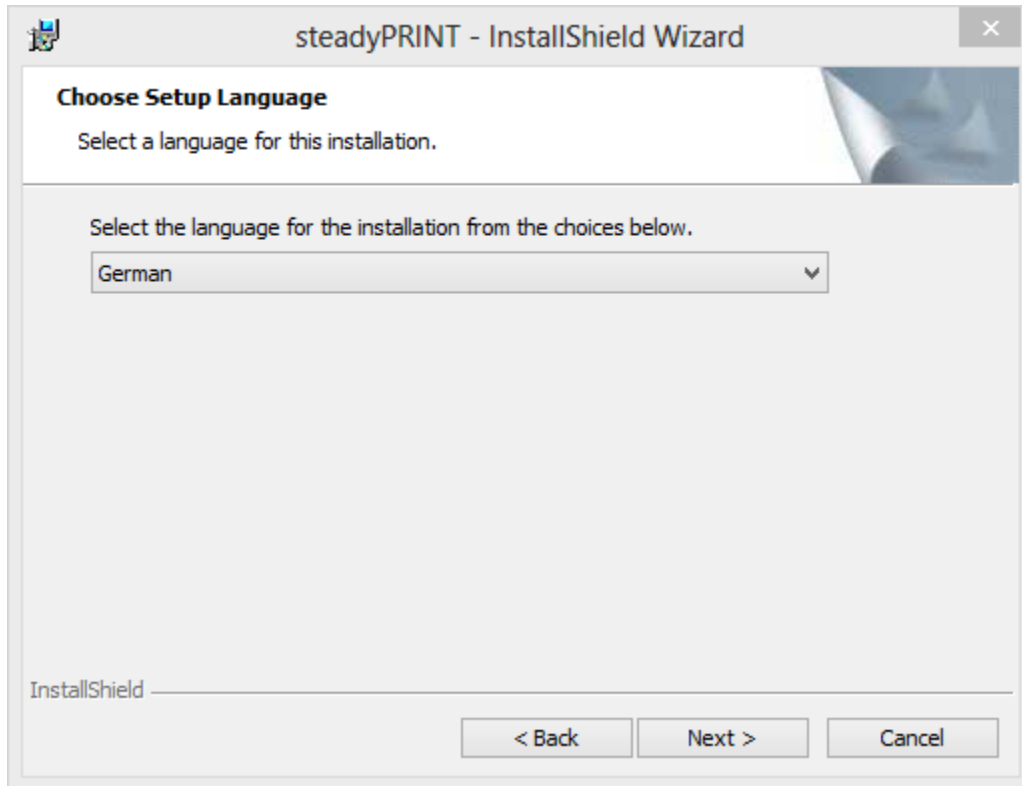
3. Now enter the following MS-DOS command line entry (see screenshot): "msiexec /a steadyPRINT.msi"



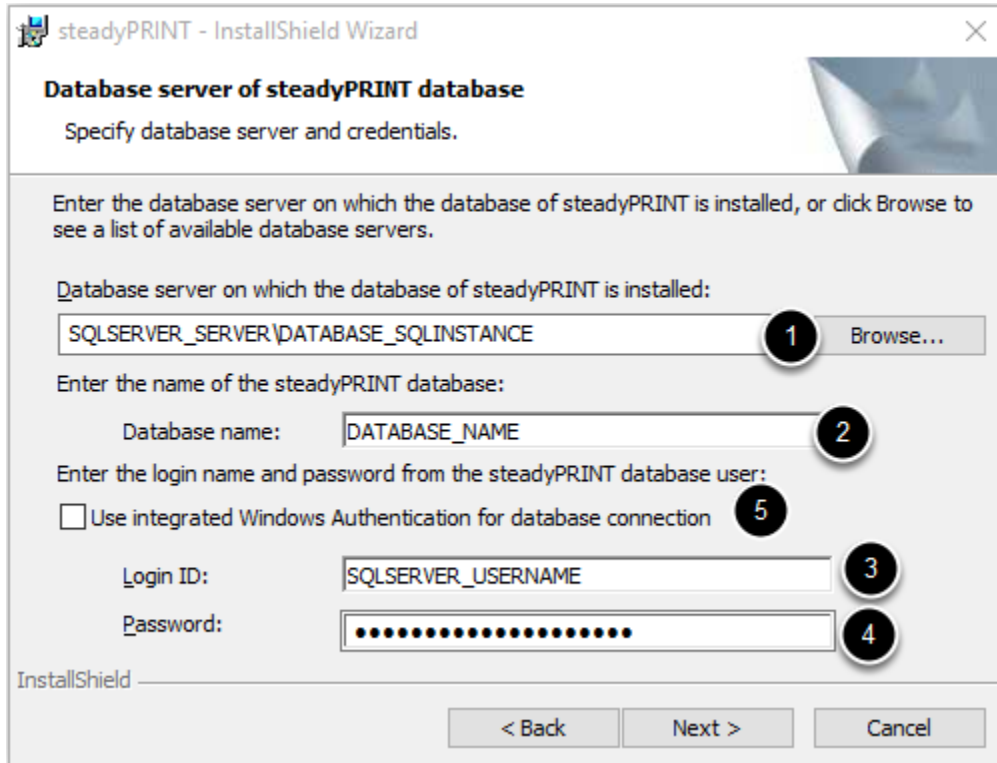
4. Continue ...



5. Agree to the license agreement and click on Next ...



6. Select a language and click on Continue ...



7. Enter your SQL database server with the SQL database instance, the database name as well as the steadyPRINT database user and the corresponding password for logon. Then click Continue ...

Please note

In case you do not create the MSI package using the GUI interface but via the MS-DOS command line instead, the following properties are of importance:

Property "**IS_SQLSERVER_SERVER**" (see screenshot - sequence 1)

This property includes the database server, for example
IS_SQLSERVER_SERVER="database server\sqlinstance".

Property "**IS_SQLSERVER_DATABASE**" (see screenshot - sequence 2)

This property includes the database name, for example
`IS_SQLSERVER_DATABASE="database name"`.

Property "**IS_SQLSERVER_USERNAME**" (see screenshot - sequence 3)

This property contains the database user of the SQL instance, for example
`IS_SQLSERVER_USERNAME="database user"`.

Property "**IS_SQLSERVER_PASSWORD**" (see screenshot - sequence 4)

This property includes the database password, for example
`IS_SQLSERVER_PASSWORD="database password"`.

Property "**USE_INTEGRATED_AUTH**" (see screenshot - sequence 4)

This property determines whether the SQL server authentication takes places in accordance with the integrated Windows authentication or not. By default, this property is disabled. If you want to use the Windows authentication, the field for database user and password remains blank. For authentication, please use the service user that is to be specified in the next step. Make sure that this user is allowed to access the database and has all the required authorizations.

When creating an administrative MSI package via the MS-DOS command line, the application of the properties could be as follows:

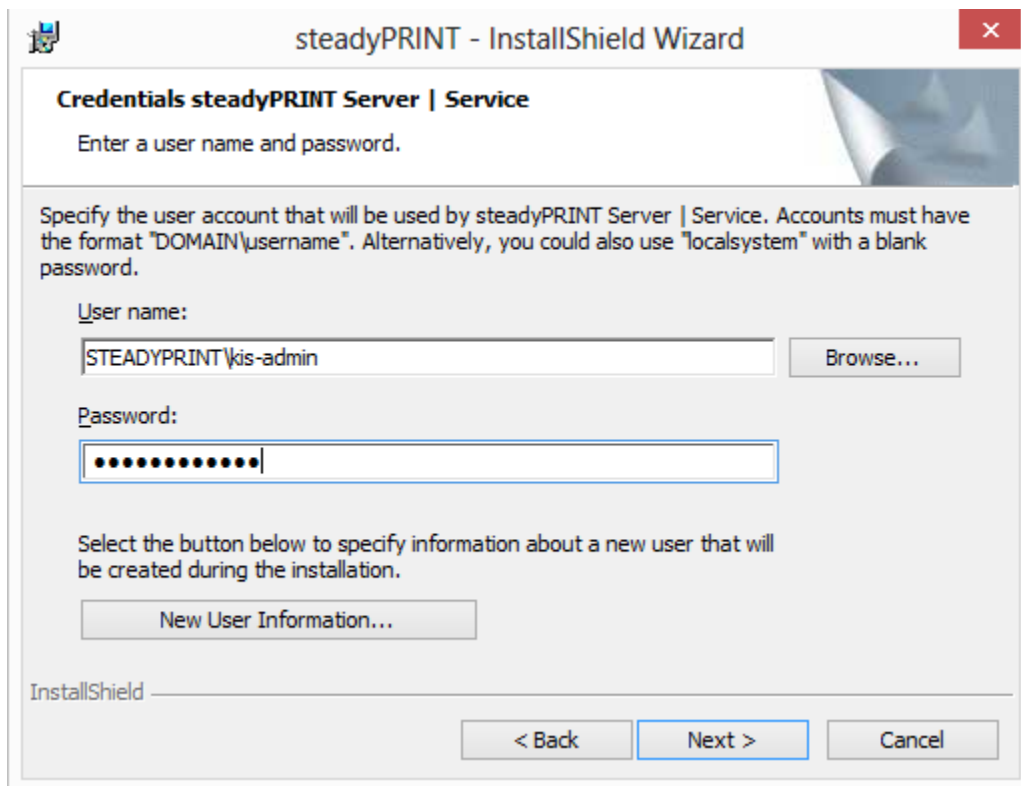
Example with SQL Server Authentication

```
msiexec /a "\\Share-Name\" /qb IS_SQLSERVER_SERVER="sqlserver\sqlinstance"  
IS_SQLSERVER_DATABASE="printerMap" IS_SQLSERVER_USERNAME="pm"
```

```
IS_SQLSERVER_PASSWORD="printerMapping1!"  
AdminProperties="IS_SQLSERVER_SERVER;IS_SQLSERVER_DATABASE;IS_SQLSERVER_USERNAME;IS_SQLSERVER_PASSWORD" TARGETDIR="\Share\Software  
Installation\steadyPRINT 6.0.0"
```

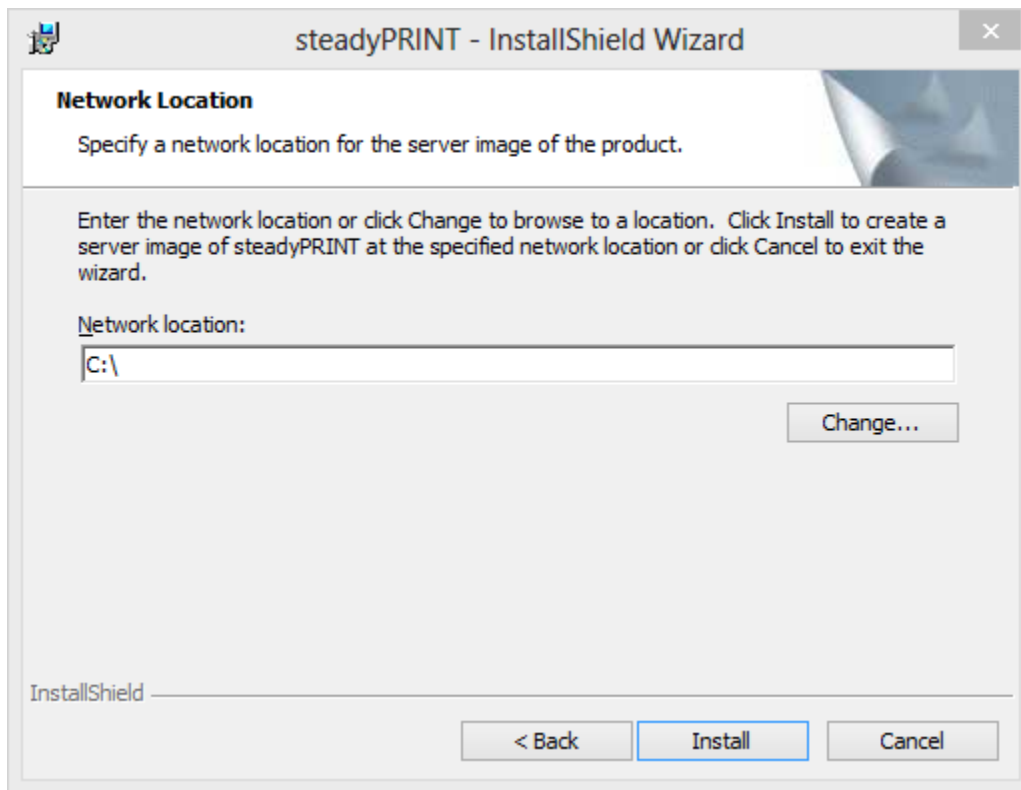
Example with Integrated Windows Authentifizierung

```
msiexec /a "steadyprint.msi" /qb IS_SQLSERVER_SERVER="sqlserver\sqlinstanz"  
IS_SQLSERVER_DATABASE="printerMap" USE_INTEGRATED_AUTH="1"  
IS_NET_API_LOGON_USERNAME="steadyprint.com\spuser"
```



8. As an option, please enter the service account or password for the steadyPRINT Service to run. The local system account "localsystem" is predefined by default.

Note: When indicating the service account, please make sure that the specified user has been added to the local safety directive “Log on as a Service”.



9. Enter here the location of your share (directory of the server in the network) where the newly generated MSI package with administrative rights should be saved.

For example: "C:\Share\Software Installation\steadyPRINT 6.0.0". To confirm your entries, click on Install and conclude the Wizard process.

Installation of the package in the network using AD

Example

- Create an OU called "Software installation",
- create an AD group called "steadyPRINT 6.0.0",
- add computers to the AD group,

- create a new policy (group policy "steadyPRINT 6.0.0"),
- delete the default settings and add the AD group,
- edit the policy -> Software settings -> create a package under software installation -> select the package from the share -> check "uninstall the application if it lies beyond the administrative domain"

Uninstalling the MSI package in the network

Example

Remove the targeted computers from the AD group to have steadyPRINT uninstalled.

Installing administrative MSI package for software distribution in the network from the Windows Shell (without group policies)

```
C:\_temp>msiexec.exe /package \\net02\netlogon\Tools\steadyprintagent\steadyPRINT.msi /quiet
```

Example

```
msiexec.exe /package \\net02\Netlogon\Tools\steadyPRINTagent\steadyPRINT.msi /quiet
```

Installing administrative MSI package for software distribution in the network from the Windows Shell (without group policies) for ALL users

```
C:\>msiexec /package \\net02\Netlogon\Tools\steadyPRINTagent\steadyPRINT.msi /quiet ALLUSERS=1
```

Example

```
msiexec /package \\net02\Netlogon\Tools\steadyPRINTagent\steadyPRINT.msi /quiet ALLUSERS=1
```

Installation of certain components by parameter transfer

```
C:\>msiexec /i steadyPRINT.msi /quiet ADDLOCAL=Center,Server
```

By transferring parameters when calling up the MSI package you can determine the components to be installed or pre-selected.

The following example shows the installation of the steadyPRINT Center and steadyPRINT Server as a Silent Installation.

Example

```
msiexec /i steadyPRINT.msi /quiet ADDLOCAL=Center,Server
```

List of all components

Agent = steadyPRINT Agent (Client)

VPD = steadyPRINT VPD (print dialog)

FollowMeServer = steadyPRINT Mobile back end (Web Service components for IIS)

Service = steadyPRINT Service (Service for Agent)

Center = steadyPRINT Center

Backup = steadyPRINT Server

VisitorServer = steadyPRINT Guest back end

Note: Please pay attention to the correct spelling of the components. The installation routine is among others - case-sensitive.